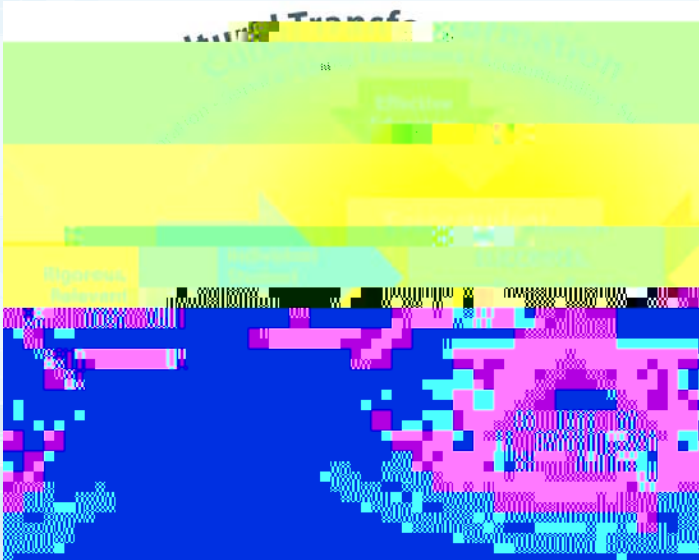


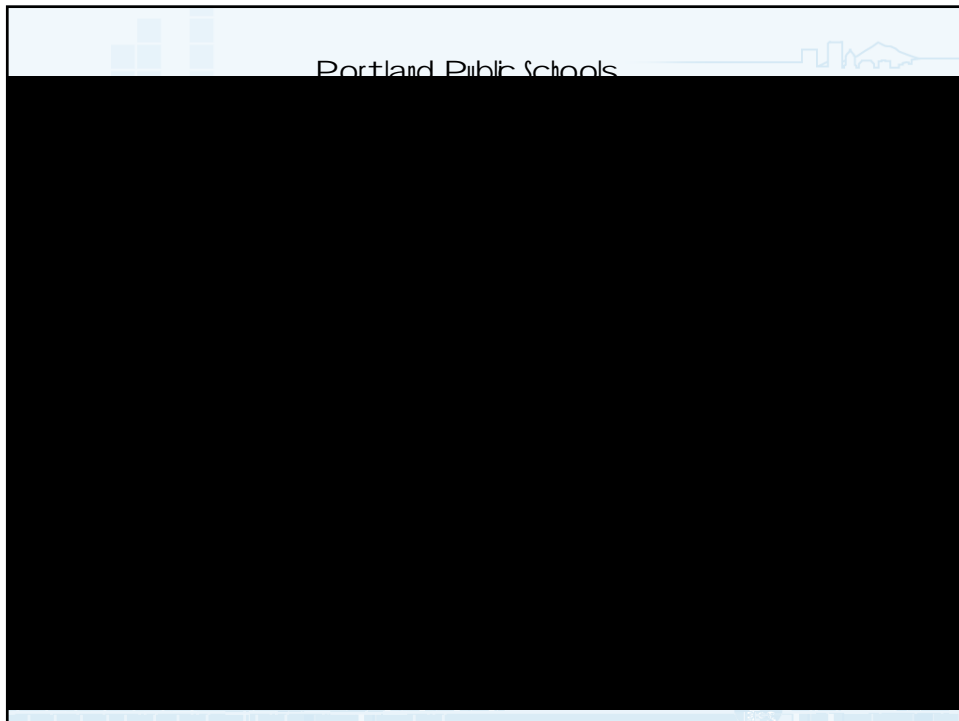
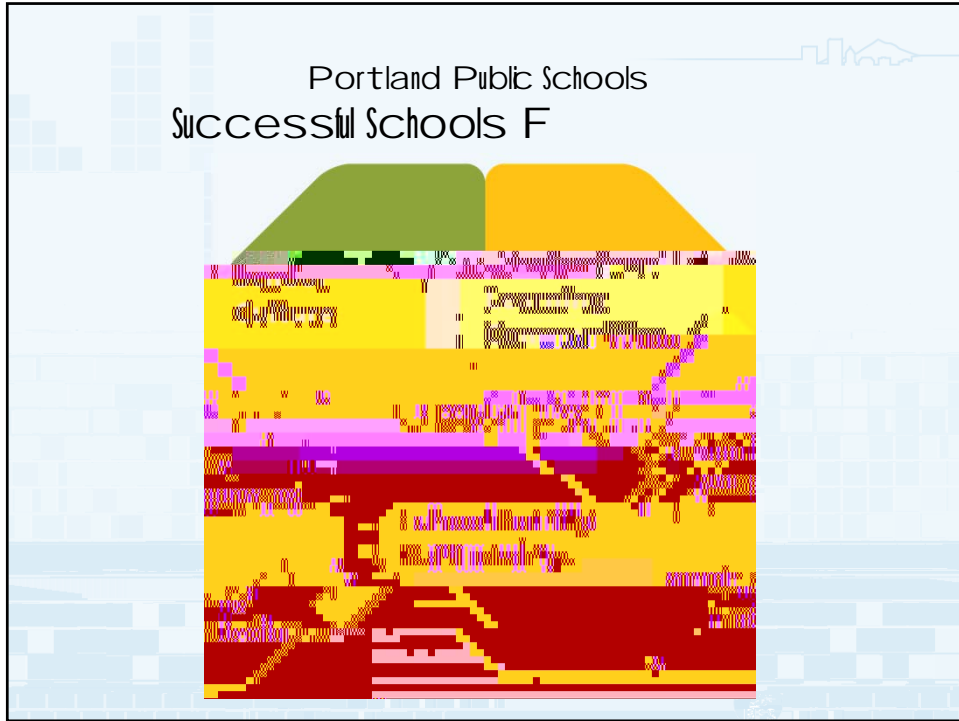
# PPS MISSION

Every student by name,  
prepared for college, career  
and participation as an  
active community member,  
regardless of race or class.

Portland Public Schools  
Strategic F



The diagram shows a multi-layered structure. At the top is a green section with the text 'Strategic Framework'. Below this is a yellow section with the text 'Strategic Pillars'. The bottom section is blue and contains a large, stylized graphic of a person's head and shoulders, rendered in a grid-like pattern. The text 'Strategic Pillars' is also visible in the blue section.





# 2015-16 Budget F

- Standard budget current levels of service to

## School Staffing

Board Staffing  
 Targets

- Use by school and actual to go by
- Plan for school to capacity

13

## School Staffing

- Main equity formula
- Non-formula additions
  - State
  - Unifund (e.g. California)
  - Unifund (e.g. Bond)
  - Misc
- Set aside P/FTE to address

about 1/2 of 2015 to actual (actual)

14

## Equity Allocation

- 4% of ratio funding to schools with 15%+ free by direct certification meals status (**SES**)
- 4% of ratio funding to schools with 40% **Combined Underserved**
  - Students from one of the four historically underserved racial groups (Black, Latino, Native American, and Pacific Islander)
  - Students qualifying for special education services
  - Students qualifying for English as a Second Language Services
  - Students eligible for free by direct certification meals status

## Staffing Formula

Ratio FTE  
Assigned





Priority: Early Literacy

100% of third graders reading at grade level

Priority: Early Literacy

School-based Staffing (GF)	
Educational Assistant for Kindergarten <ul style="list-style-type: none"> <li>Add 0.5 EA in each school (50% total) (29 schools)</li> </ul>	21.5 F
Target: Early Literacy support for Foundational Skills <ul style="list-style-type: none"> <li>Add 0.5 EA in each school (8 schools)</li> </ul>	8.0 F

PDV  
Reduce Ex clusory Discipline

Reduce to  
 cards by  
 50%, and  
 Reduce  
 discipline by 50%

Priority: Reduce Ex clusory Discipline

Schoolbased Staffing	
Counselors in K-5 <ul style="list-style-type: none"> <li>400:1 at the school level</li> <li>1.0 FTE</li> </ul>	14.5 F
Counselors in K-8 and Middle	

**PDR**  
**HS Graduation and Completion**

Accelerate trajectory of increase in our 4 year and 5 year graduation and completion rates

**PDR** **HS Graduation and Completion**

<b>School-based Staffing</b>	
<b>Increased elective offerings: Middle Grades (K8 and MS)</b> <ul style="list-style-type: none"> <li>• Prioritize Art/Music, AVID, College and Career Readiness</li> </ul>	<b>17.0 FTE</b>
<b>College and Career Readiness: High Schools</b> <ul style="list-style-type: none"> <li>• College and Career Readiness, AVID</li> </ul>	<b>13.5 FTE</b>
<b>High School teachers</b>	<b>20 FTE</b>

## PDR HS Graduation and Completion

### Athletics

- MS Athletics
-

# Strengthen School Capacity to address all Priorities

School-based Staffing	
School Secretaries K-8 <ul style="list-style-type: none"><li>• <del>100</del> 40 new sub</li></ul>	<b>5.63 FTE</b>
Educational Assistant and Paraprofessional Substitutes <ul style="list-style-type: none"><li>• Add 5 EA and 5 paraprofessionals</li></ul>	<b>5.0 FTE</b>



# Levels of F



# State F

Pol budget  
p \$7.5 bilion  
a p p p

# State F

- ~~California~~  
is \$7.235 billion K-12

According to OE, this is more than \$120 less dollars per AM than current biennium allocations

in





- Stalls current forward momentum in critical areas, including:
  - CTE Exp
  - SpEn
  - BildC-
  - BELD, Dal
  - Lag
  - IntSpal
  - Educist
  - (egSWIFT)
  - SchSe
  - AVID
  - EatL
  - Eipad
  - TaigB
  - DPPBIS,
  - Ruic
  - Te
  - Stad
  - Tach